

WE HEREBY CERTIFY THAT WE ARE THE OWNERS OF THE PROPERTY SHOWN AND DESCRIBED HERE ON AND THAT WE HEREBY ADOPT THIS PLAN OF SUB-DIVISION WITH OUR FREE CONSENT ESTABLISH MINIMUM BUILDING LINES, AND DEDICATE ALL ROADS, WALKS, GREEN AREAS, AND OTHER SITES TO PUBLIC OR PRIVATE USE AS NOTED. FURTHER, WE CERTIFY THE LAND AS SHOWN HEREON IS WITHIN THE PLATTING JURISDICTION OF WILKES COUNTY.

I, Lena M. Everett, THE COUNTY CLERK OF WILKES COUNTY, NORTH CAROLINA, DO CERTIFY THAT ON THE 9th DAY OF September 1980 THE BOARD OF COUNTY COMMISSIONERS APPROVED THIS PLAN FOR RECORDING AND ACCEPTED THE DEDICATION OF THE ROADS, EASEMENTS, RIGHTS-OF-WAY AND PUBLIC PARKS AND OTHER SITES FOR PUBLIC PURPOSES AS SHOWN HEREON, BUT ASSUME NO RESPONSIBILITY TO OPEN OR MAINTAIN THE SAME UNTIL, IN THE OPINION OF THE GOVERNING BODY OF WILKES COUNTY IT IS IN THE PUBLIC INTEREST TO DO SO.

MAG. 1980

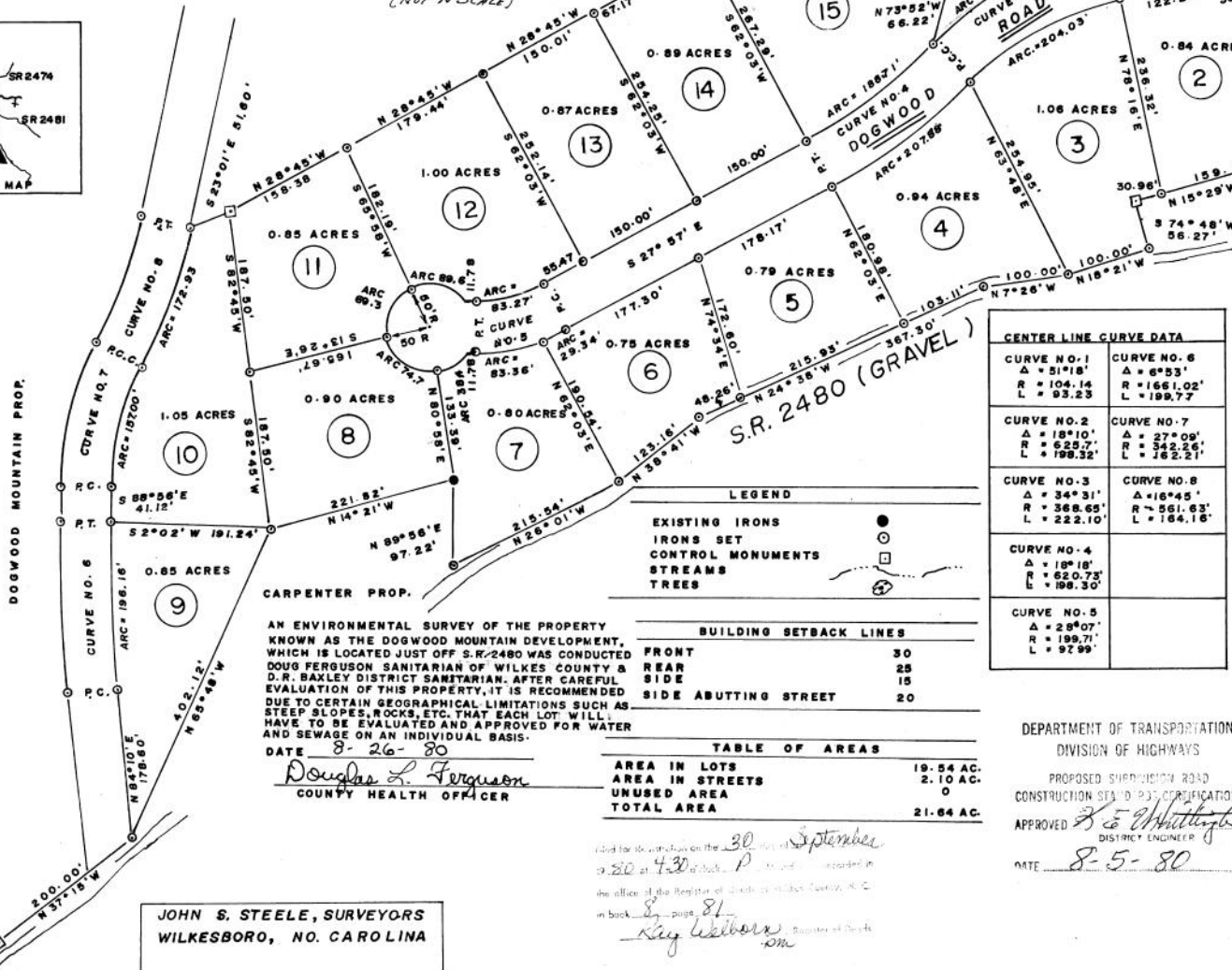
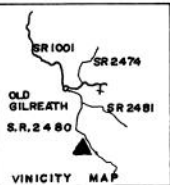
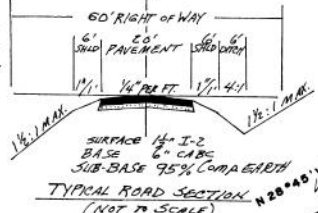
9/13/80 BY: Johnston agent
DATE OWNER OR AGENT

September 9, 1980
DATE

Lena M. Everett
COUNTY CLERK

I, CLARENCE BENTON, CHAIRMAN OF WILKES COUNTY JOINT PLANNING BOARD, HEREBY CERTIFY THAT SAID PLANNING BOARD DULY APPROVED THE FINAL PLAN OF THE SUB-DIVISION ENTITLED DOGWOOD MOUNTAIN ON THE 28th DAY OF July 1980.

Clarence J. Benton
CHAIRMAN



I JOHN S. STEELE, hereby certify that this map was prepared from an actual field survey made by me; that it represents a part of those lands described in Book 1000, Page 1000; that it is in all respects correct to the best of my knowledge and belief; that the error of closure was calculated by latitudes and departures and is 1/10,000; that this map was prepared in accordance with GS 47-30 as amended. This the 28th day of July, 1980.

Signature: John S. Steele L-1474
NORTH CAROLINA REGISTERED LAND SURVEYOR
WILKES COUNTY

PERSONALLY APPEARED BEFORE ME THIS DAY JOHN S. STEELE, REGISTERED LAND SURVEYOR, AND DULY ACKNOWLEDGES THE MAKING OF THE MAP AS SHOWN HEREON FOR THE PURPOSES THEREIN EXPRESSED. THEREFORE LET THE INSTRUMENT WITH THE CERTIFICATES BE REGISTERED.

WITNESS MY HAND AND SEAL THIS THE 14 DAY OF July 1980.

Clarence J. Benton
NOTARY PUBLIC

MY COMM. EXPIRES 5-30-84

CENTER LINE CURVE DATA	
CURVE NO. 1 Δ = 51°18' R = 104.16 L = 93.23	CURVE NO. 6 Δ = 6°53' R = 1661.02' L = 189.77'
CURVE NO. 2 Δ = 18°10' R = 529.71' L = 188.52'	CURVE NO. 7 Δ = 27°09' R = 342.26' L = 162.21'
CURVE NO. 3 Δ = 34°31' R = 368.65' L = 222.10'	CURVE NO. 8 Δ = 16°45' R = 561.63' L = 164.16'
CURVE NO. 4 Δ = 19°18' R = 620.73' L = 198.30'	CURVE NO. 5 Δ = 29°07' R = 199.71' L = 92.99'

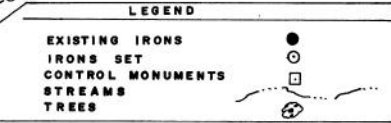


TABLE OF AREAS	
AREA IN LOTS	19.54 AC.
AREA IN STREETS	2.10 AC.
UNUSED AREA	0
TOTAL AREA	21.64 AC.

DEPARTMENT OF TRANSPORTATION
DIVISION OF HIGHWAYS
PROPOSED SUBDIVISION ROAD
CONSTRUCTION SETBACKS SPECIFICATION
APPROVED J. S. Steele
DISTRICT ENGINEER
DATE 8-5-80

DOGWOOD MOUNTAIN
A RESIDENTIAL DEVELOPMENT

BRUSHY MTN. TWP. WILKES CO.
NORTH CAROLINA

SURVEYED & PLATTED BY J.S. STEELE, R.L.S. L-1474
JOHN S. STEELE, SURVEYOR S/WILKESBORO, N.C.

SCALE: 1/4" = 100' DATE: 7-15-80

JOHN S. STEELE, SURVEYORS
WILKESBORO, NO. CAROLINA

Filed for record on the 30th day of September 1980 at 4:30 o'clock P.M. recorded in the office of the Register of Deeds of Wilkes County, N.C. in book 81, page 81.
Ray Walker Register of Deeds